

RAPID CHARGER

# KSC-35

## SERVICE MANUAL

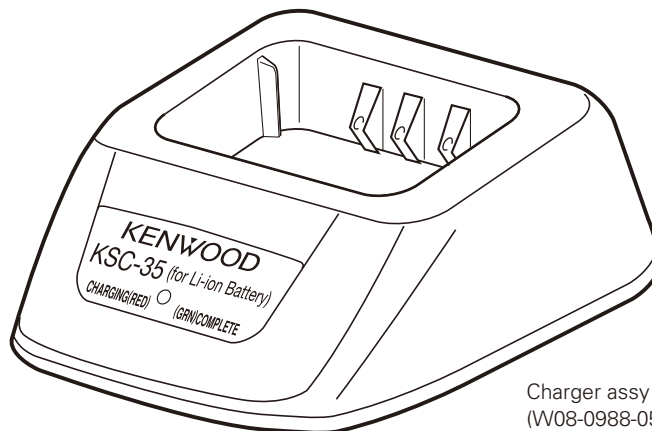
REVISED

# KENWOOD

Kenwood Corporation

© 2009-4 PRINTED IN JAPAN  
B51-8760-20 (N) PDF

This service manual has been revised  
due to the addition of type X.



Charger assy  
(W08-0988-05)

## CONTENTS

PARTS LIST .....	2
SPECIFICATIONS .....	2
PC BOARD .....	3
SCHEMATIC DIAGRAM .....	4
FLOW CHART .....	5
KNB-45L (Li-ion Battery Pack) .....	BACK COVER

# KSC-35

## Document Copyrights

Copyright 2009 by Kenwood Corporation. All rights reserved.

No part of this manual may be reproduced, translated, distributed, or transmitted in any form or by any means, electronic, mechanical, photocopying, recording, or otherwise, for any purpose without the prior written permission of Kenwood.

## Disclaimer

While every precaution has been taken in the preparation of this manual, Kenwood assumes no responsibility for errors or omissions. Neither is any liability assumed for damages resulting from the use of the information contained herein. Kenwood reserves the right to make changes to any products herein at any time for improvement purposes.

## PARTS LIST

\* : New Parts

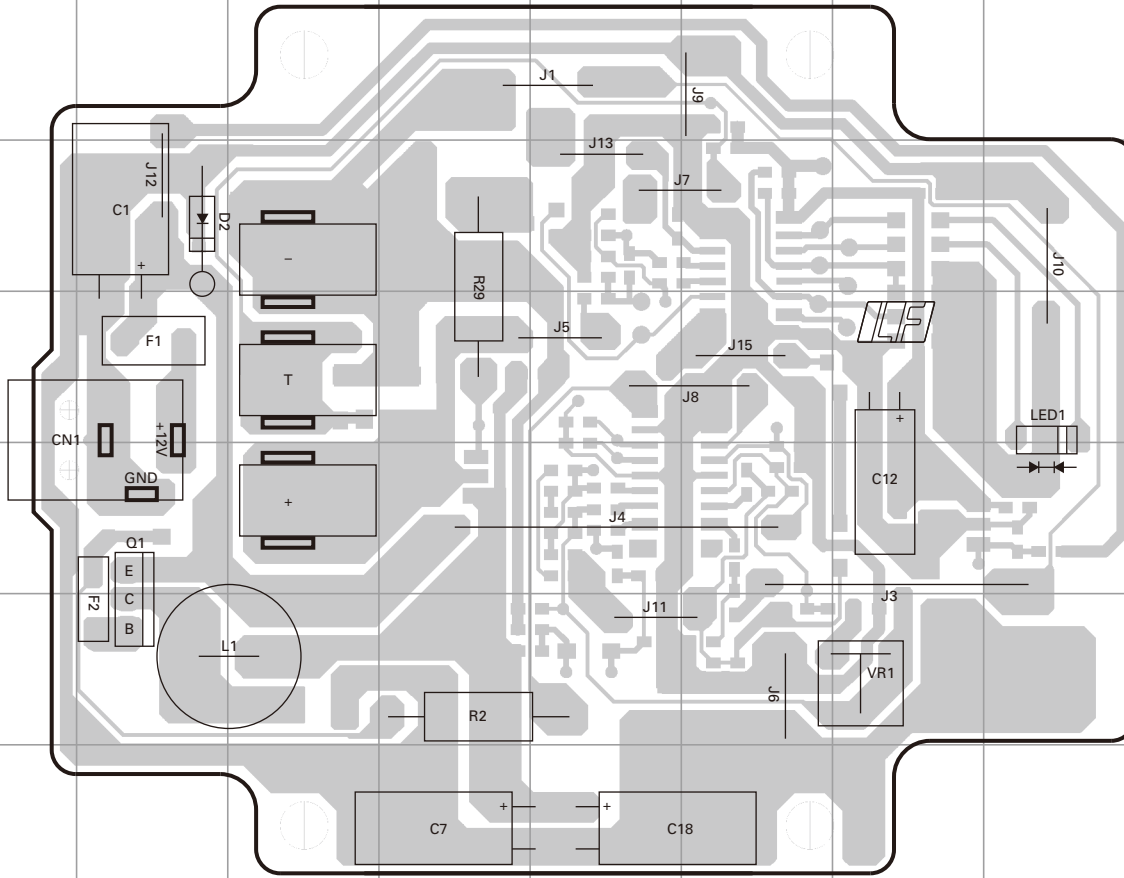
Ref. No.	Address	New parts	Parts No.	Description	Destination
<b>KSC-35</b>					
		*	W08-0988-05	CHARGER ASSY	
			W08-0989-15	AC ADAPTER	K
			W08-0992-05	AC ADAPTER	E
			W08-0993-05	AC ADAPTER	T
		*	W08-1070-05	AC ADAPTER	X

## SPECIFICATIONS

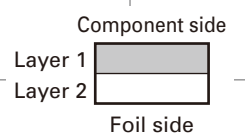
AC Voltage .....	100~240V
Dimensions (W x H x D) .....	.86.3 x 43.2 x 100.0 mm
Weight (charger only) .....	Approx. 90g
Approximate Charging Times	
KNB-45L (Li-ion : 7.4V, 2000mAh) .....	180 minutes

# PC BOARD KSC-35

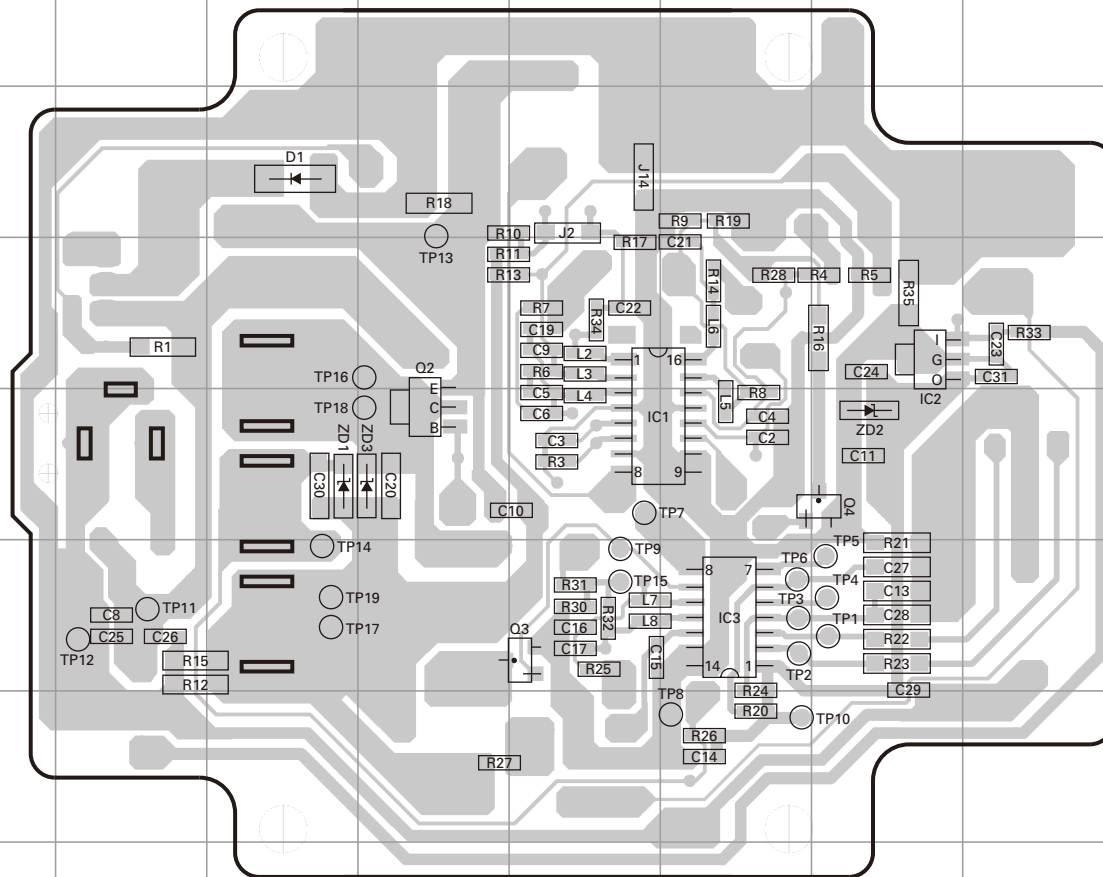
## CHARGER UNIT (W02-3713-08) Component side view



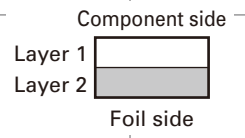
Ref. No.	Address
Q1	5B
D2	3B
LED1	4H



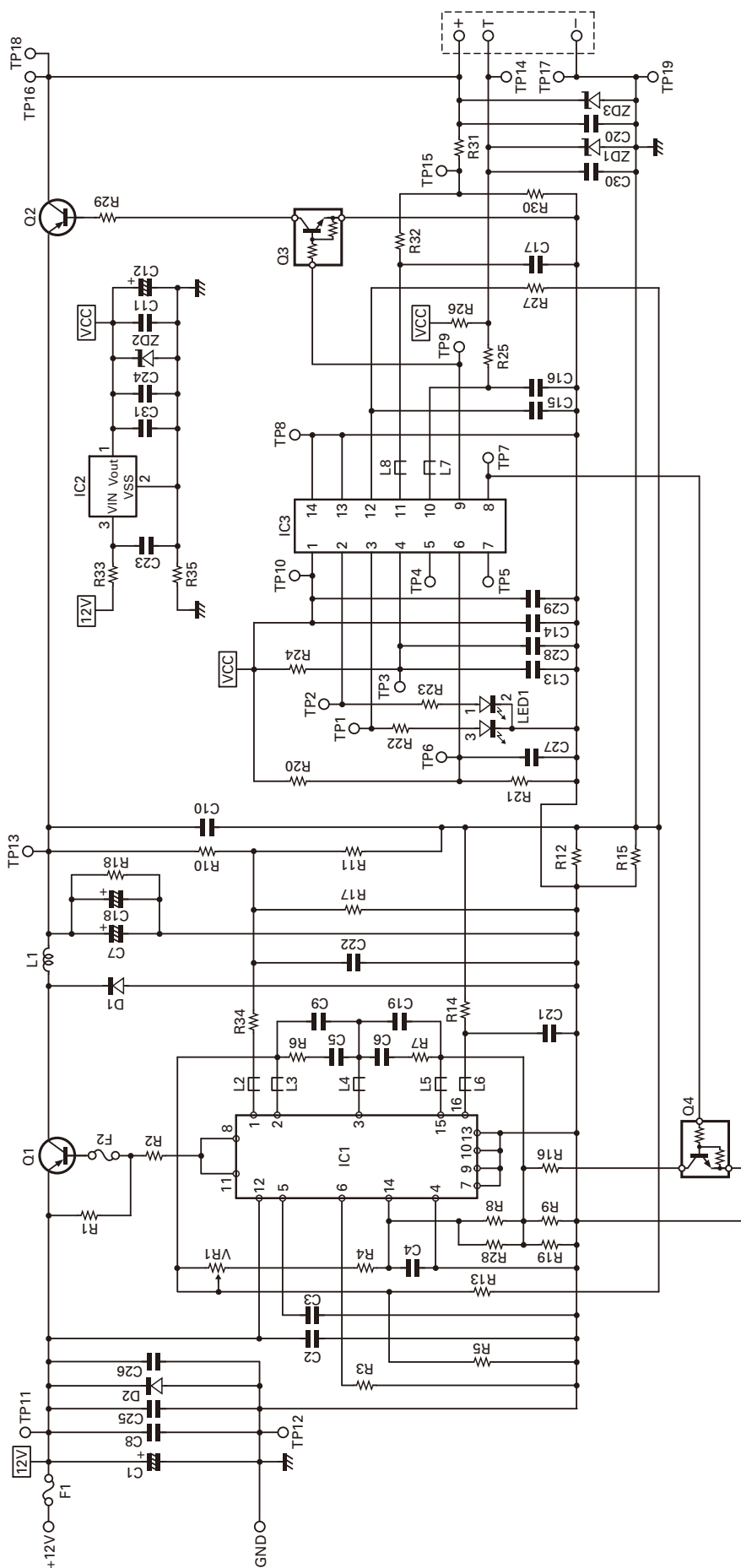
## CHARGER UNIT (W02-3713-08) Foil side view



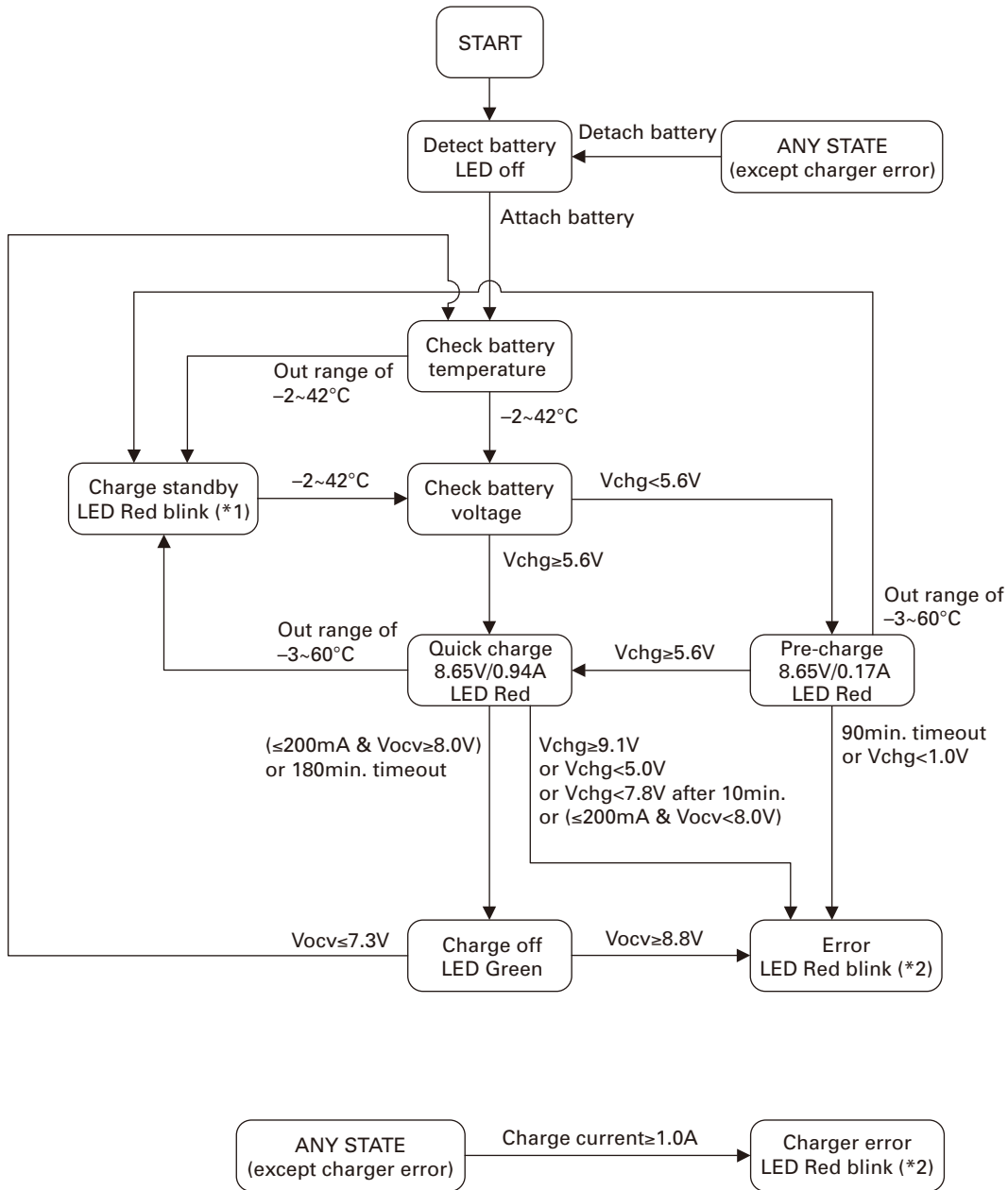
Ref. No.	Address
IC1	11E
IC2	10G
IC3	12F
Q2	11D
Q3	12E
Q4	11G
D1	9C
ZD1	11C
ZD2	11G
ZD3	11D



# KSC-35 SCHEMATIC DIAGRAM



## FLOW CHART



\* Charge voltage is 8.65V. It is higher than normally charge voltage 8.4V. 0.25V is offset voltage as the diode  $V_f$  which is in the battery pack.

LED blink pattern  
\*1 : 0.625Hz flash  
\*2 : 2.5Hz flash

$V_{chg}$  : battery voltage at charging  
 $V_{ocv}$  : battery voltage at non-charging

# KSC-35

## KNB-45L (Li-ion Battery Pack)

### External View



### Specifications

Voltage.....	7.4V
Battery capacity.....	2000mAh

## Kenwood Corporation

2967-3, Ishikawa-machi, Hachioji-shi, Tokyo, 192-8525 Japan

### Kenwood U.S.A. Corporation

P.O. BOX 22745, 2201 East Dominguez Street, Long Beach,  
CA 90801-5745, U.S.A.

### Kenwood Electronics Canada Inc.

6070 Kestrel Road, Mississauga, Ontario, Canada L5T 1S8

### Kenwood Electronics Deutschland GmbH

Rembrücker Str. 15, 63150 Heusenstamm, Germany

### Kenwood Electronics Belgium N.V.

Leuvensesteenweg 248 J, 1800 Vilvoorde, Belgium

### Kenwood Electronics France S.A.

L'Etoile Paris Nord 2, 50 Allée des Impressionnistes,  
Bp 58416 Villepinte, 95944 Roissy Ch De Gaulle Cedex

### Kenwood Electronics UK Limited

KENWOOD House, Dwight Road, Watford, Herts.,  
WD18 9EB United Kingdom

### Kenwood Electronics Europe B.V.

Amsterdamseweg 37, 1422 AC Uithoorn, The Netherlands

### Kenwood Electronics Italia S.p.A.

Via G. Sirtori, 7/9 20129 Milano, Italy

### Kenwood Ibérica, S.A.

Bolivia, 239-08020 Barcelona, Spain

### Kenwood Electronics Australia Pty. Ltd.

(A.C.N. 001 499 074)

16 Giffnock Avenue, Centrecourt Estate, North Ryde, N.S.W. 2113 Australia

### Kenwood Electronics (Hong Kong) Ltd.

Unit 3712-3724, Level 37, Tower one Metroplaza, 223 Hing Fong Road,  
Kwai Fong, N.T., Hong Kong

### Kenwood Electronics Singapore Pte Ltd

1 Ang Mo Kio Street 63, Singapore 569110